

# RB-850 AH 8 – Wire mesh belt continuous shot blasting machine



## Application

The RB-850 AH 8 wire mesh shot-blasting machine is mainly suitable for the low investment cost de-rusting, de-scaling and cleaning of

- Small castings made of aluminium or steel
- Small forged parts made of aluminium or steel
- All smaller parts that cannot be bulk blasted

## Description

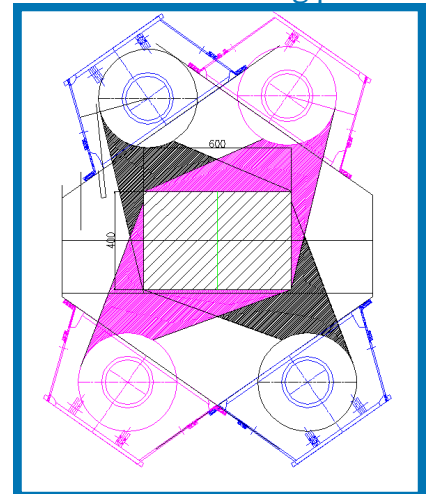
The machine is equipped with 8 pieces of ABR 380 type blasting turbines. 4 of these turbines is situated above the wire mesh conveyor top level and the rest of the turbines are placed under it to ensure the possible best covering of the through-pass cross section. Blasting is done in an angle of  $\sim 70^\circ$  to the direction of proceeding to reach lengthened covering.

The turbines are gravity fed with abrasive material, they have eight blasting blades and a pre-accelerator and they allow precise blasting direction adjustment.

The inner surfaces of the machine in the active zone are covered with highly wear-resistant manganese steel, other inner parts are protected by wear-resistant rubber sheet. This rubber cover has noise-reducing effect as well. wires in the machine house are made of highly wear resistant spring steel to provide suitable lifetime for the conveyor.

The three-layer rubber curtains at the inlet and outlet sluice prevent the high velocity abrasive particles from shooting out.

## Blasting pattern



Due to the 4 blasting turbines this machine provides fast cleaning speed for this cross section.



The closed and continuous circulation of the shot-blasting media is ensured by a screw conveyor, bucket elevator, abrasive cleaning air classifier unit and a feeding unit. In foundries an additional magnetic drum separator is built in the machine to separate forming sand from the circulation.

The clean work-piece is de-dusted by a high pressure blow-off fan built on the exit section of the machine with adjustable height.

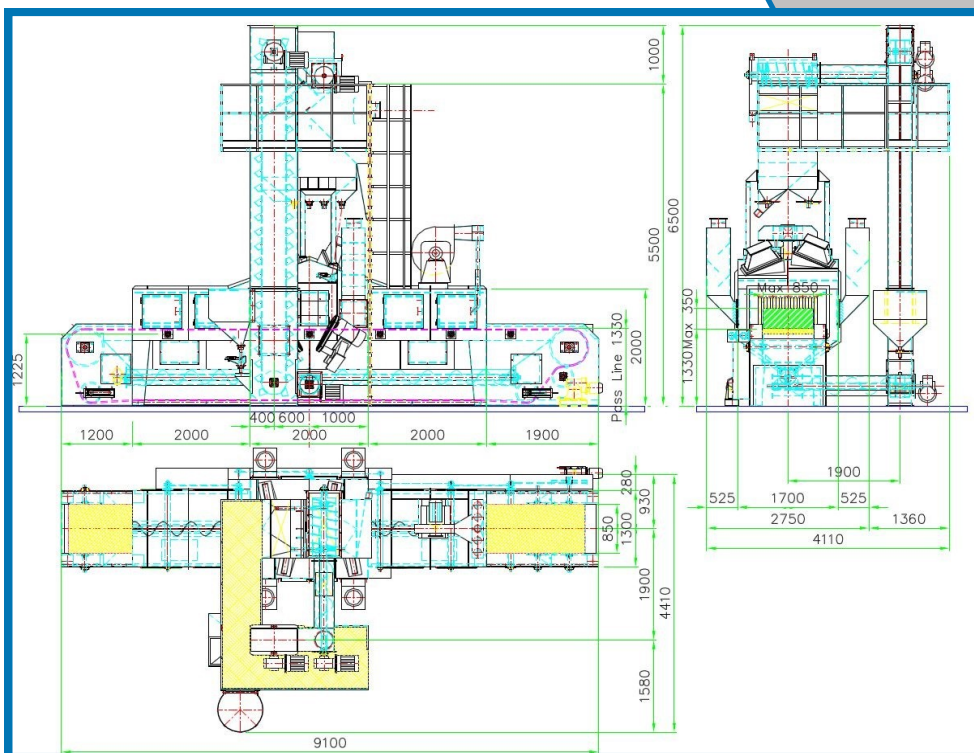
The dust-aspirating and separating system of the equipment consists of galvanized steel air-ducts, form-elements, aspiration fan and filter cartridge inserted dust-separator.

Dust emission after the filter is not more than  $3\text{mg}/\text{m}^3$ .

RB-850 AH 8



## Main dimensions /RB-850 AH 8/



## Technical specifications

Through-pass width	mm	850
Height	mm	500
Min. work-piece length (shorter pieces can be cleaned by means of a so-called auxiliary)	mm	about 100
<b>Turbines</b>		
Number	piece	8
Type		ABR-380
Diameter	mm	380
Wheel speed	1/min	2800
Abrasive capacity / per turbine	kg/min	120
<b>Wire mesh conveyor</b>		
Loadability	kg/m	500
Speed range	m/min	0-4
<b>Energy demand</b>		
<b>Electrical</b>		
Basic machine	kW	62,7
Dust aspiration	kW	11
<b>Compressed air</b>		
Pressure	bar	min.6
Quantity (filter)	m <sup>3</sup> /h	12,5
Abrasive charge	kg	~2000
Proposed abrasive particle size	mm	0,4-1,2
Air to be aspirated	m <sup>3</sup> /h	14000
Filtering surface	m <sup>2</sup>	336
<b>Electrical data</b>		
Mains voltage	V	3 x 400
Control voltage	V	220
Frequency	Hz	50